

# UNIVERSITY OF RHODE ISLAND HIGHER EDUCATION INITIATIVE FOR COLLEGE AND CAREER READINESS

## FIRST SYMPOSIUM

*Higher Education's Role in the Transition to  
Common Core State Standards*

*and the Assessment of College and Career Readiness*

October 24, 2012

University of Rhode Island

Facilitated by

Kees de Groot and Diane Kern



# AGENDA

- Greetings and introductions
- Project purpose and goals
- Defining the problem--college readiness, K-16 articulation
- Overview of new assessment systems PARCC and Smarter Balanced
- Common Core State Standards—key shifts
- College and Career Readiness Determination policy
- Breakout sessions—ELA and Mathematics
- Next steps, task and Symposium 2

# PROJECT PURPOSE AND GOALS

1. Encourage collaboration and dialogue among arts and sciences professors, teacher education professors, as well as K-12 teachers and administrators statewide and nationally.
2. Facilitate engagement strategies to integrate the Common Core State Standards and PARCC college readiness expectations into:
  - university gateway courses, (e.g., mathematics, English, writing, communication, education)
  - teacher preparation curriculum
  - K-12 professional development
  - actionable information for higher educators



# HIGHER EDUCATION'S ROLE

Defining college readiness and aligning key policies for the school-to-college transition.

Developing K–12 assessments and aligning college placement policies with these assessments.

Aligning K–12 and higher education curricula.

Teacher preparation and in-service professional development.



# COLLEGE READINESS: YOUR TURN

With a neighbor discuss:

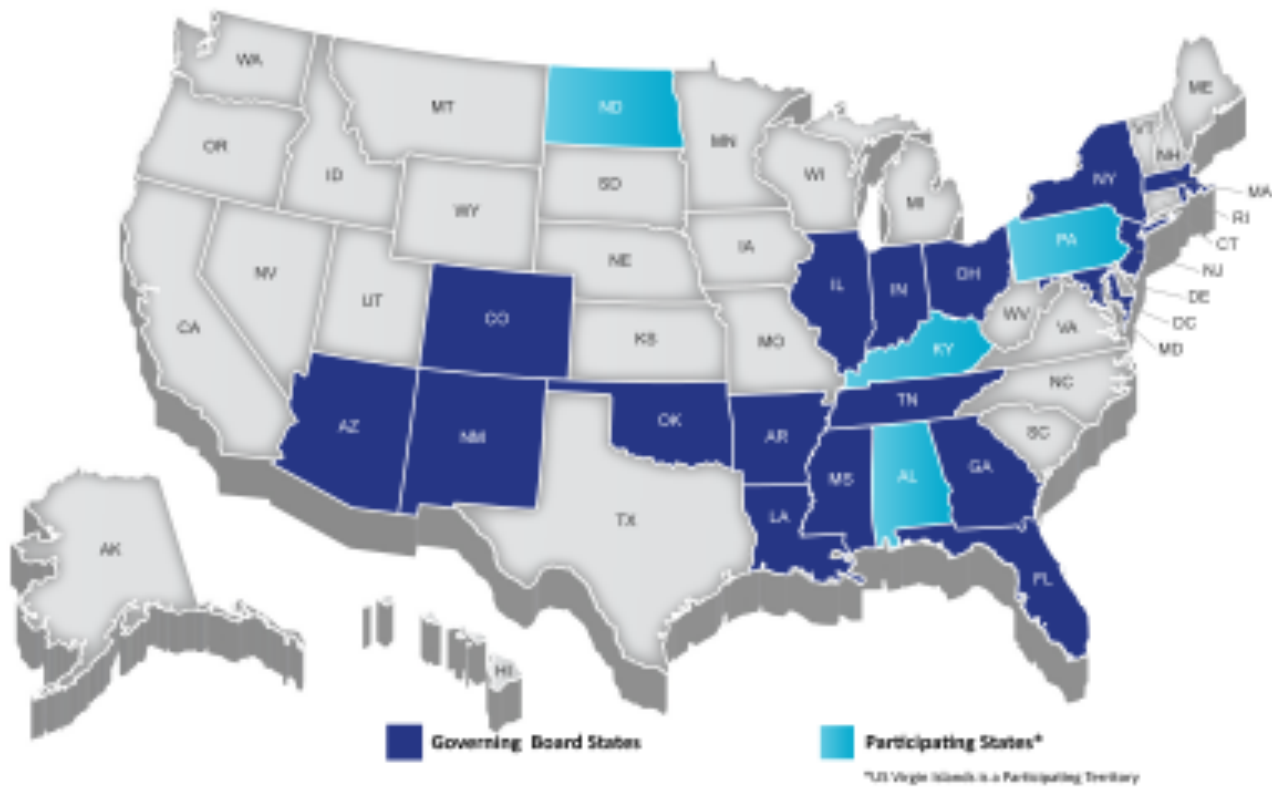
1. What is your definition of college readiness?
2. What are institutional barriers and academic challenges for students currently deemed college ready?

# WHAT IS PARCC?

## Partnership for the Assessment of Readiness for College and Careers

- PARCC is an alliance of 23 states + U.S. Virgin Islands working together to develop a common set of K-12 assessments in English and mathematics of the Common Core State Standards (CCSS).
- Assessments will identify whether students are ready for and prepared to succeed in entry-level, credit-bearing postsecondary courses by the time they graduate from high school. (First implemented 2014-2015)
- PARCC is state-led. RI and MA are among the governing states.
- PARCC states educate more than 25 million students and includes 10 of the 12 Race to the Top states
- Achieve is PARCC's project management partner and received a \$186 million grant from Race to the Top

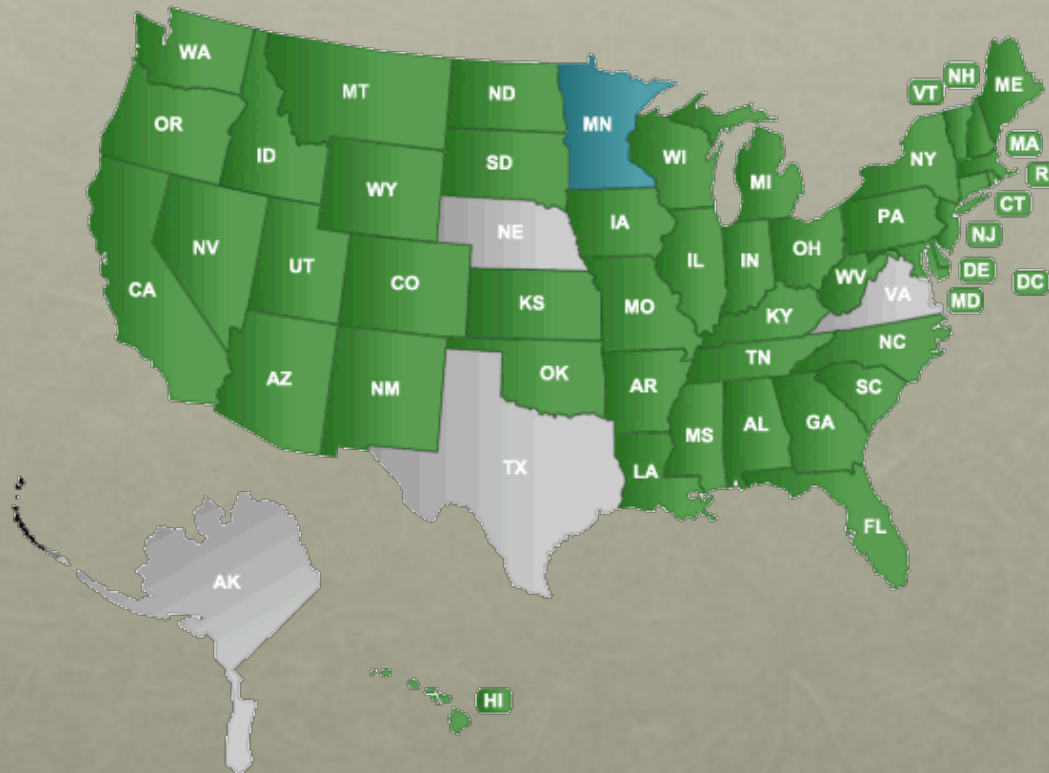
# PARCC STATES





## A map of the United States where each state is labeled with its two-letter abbreviation. The states are color-coded based on their role in the 2008 election. Green states include WA, OR, CA, NV, ID, MT, SD, KS, MO, IA, WI, MI, WV, NC, SC, ME, NH, VT, CT, DE, and HI. Blue states include ND, WY, PA, and AL. Gray states include AK, AZ, AR, LA, TX, OK, NE, MN, IL, IN, OH, KY, TN, GA, FL, MS, AL, and others. A legend in the bottom right corner indicates that green represents 'Governing State' and blue represents 'Advisory State'.

# COMMON CORE STATE STANDARDS



## ELA: WHAT ARE THE SHIFTS AT THE HEART OF PARCC DESIGN AND THE CCSS?

1. **Complexity:** Regular practice with complex text and its academic language.
2. **Evidence:** Reading and writing grounded in evidence from text, literary and informational.
3. **Knowledge:** Building knowledge through content rich nonfiction.



# WHAT ARE THE SHIFTS IN THE MATH STANDARDS AT THE HEART OF PARCC DESIGN?

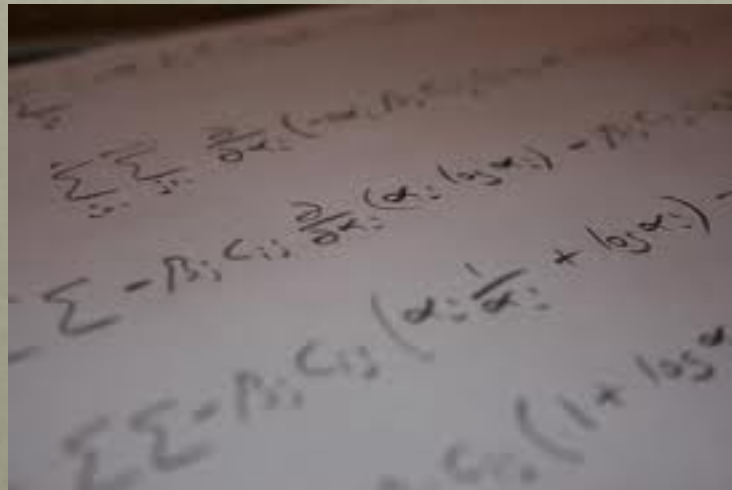
1. **Focus:** The PARCC assessments will focus strongly where the Common Core State Standards focus. Students will have more time to master concepts at a deeper level.
2. **Coherence:** Think across grades and link to major topics within grades
3. **Rigor:** In major topics, pursue conceptual understanding, procedural skill and fluency, and application.

# COLLEGE READINESS STANDARDS

- PARCC
- ACT
- SAT
- Achieve (American Diploma Project)
- Association of American Universities
- ...

# PARCC COLLEGE READINESS DETERMINATION POLICY: MATHEMATICS

Students who earn a College-Ready Determination in mathematics will have demonstrated the knowledge, skills and practices necessary to enter directly into and succeed in entry-level, credit-bearing courses in college algebra or introductory college statistics.





# PARCC COLLEGE READINESS DETERMINATION POLICY: ELA & LITERACY

Students who earn a College-Ready Determination in ELA/ literacy will have demonstrated the knowledge, skills and practices necessary to enter directly into and succeed in entry-level, credit-bearing courses in college English composition and literature, and introductory courses requiring college-level reading in a range of disciplines, such as history and the social sciences.



# PARCC VALIDATION STATEMENT

- At least 75% who perform at level 4 in **mathematics** should earn college credit by attaining at least a grade of C or its equivalent in college algebra or introductory statistics
- At least 75 % who perform at level 4 in **ELA/ literacy** should earn college credit by attaining at least a grade of C or its equivalent in college English composition or literature, or introductory courses in disciplines requiring college-level reading, such as history and the social sciences

# BREAK-OUT SESSIONS

Mathematics, Computer Science, Elementary and Secondary Education:

Jim Baglama, Jessica Libertini, Joan Peckham, Ed Lamagna, Pete Adamy, Nicole Hersey, and Kees de Groot

English, Writing, Communication, Special Education, Reading, and Secondary Education:

Ryan Trimm, Travis Williams, Nedra Reynolds, Adam Roth, Lynn Derbyshire, Bethany Hamilton-Jones, Theresa Deeney, Jim Jones, and Diane Kern.



# RESOURCES

- Wikipage:

<http://uricollegecareerreadiness.wikispaces.com>

- Newsletter

<http://uricollegecareerreadiness.wikispaces.com/Newsletter+Archive>

- Curriculum Materials Library

<http://www.uri.edu/library/cml/index.html>

- Research

# DISCUSSION

- What more do you need to know about PARCC and CCSS?
- What impact do you see for gateway courses in your discipline?
- What ideas do you have about the ways higher education can assist K-12 schools in considering key tenets of the CCSS?

# SYMPOSIUM 2

- Monday, November 5, 2012, 8:30am-noon, UClub
- Purpose:
  - To investigate the impact of the CCSS on gateway course(s).
  - To prepare for aligning gateway courses and their syllabi
    - For example, in mathematics there is a strong shift in emphasis on mathematical modeling and applications at the high school level. In ELA, there is a shift toward close reading of informational texts. How does readiness for these aspects influence the work in gateway courses. How will this be represented in course syllabi?



# SYMPOSIUM 2

- Tasks:
  - Select and bring the syllabus of one or more gateway courses in your discipline.
  - Read American Council on Education, *Implementing the Common Core State Standards: An Action Agenda for Higher Education* (paper copy in your folder)
  - Explore the **college readiness** section of the wikipage with any eye toward information to share with your colleagues.
  - We particularly encourage you to read the high school CCSS (see wikipage) and the PARCC assessment design (see folder handouts)
  - *You should expect a request to complete an on-line survey as part of our project evaluations process prior to our next symposium.*



# SYMPOSIUM 3

Friday December 7

9 AM – 3 PM